



# An Environmental Strategy for the Irish Prison Service

From Pillory to Podium

Pat Dunne

Environmental Manager



Planning & Building for Sustainability

Bre Conference IT Limerick 2008

# An Environmental Strategy

## The Context

- ◆ Prisons are part of Community
- ◆ Environmental Impact
- ◆ Responsibility



# An Environmental Strategy

What's That Smell



# An Environmental Strategy

## The Incident

- ◆ Oil Spill
- ◆ Legislative Obligation
- ◆ Impact on Local Environment



# An Environmental Strategy

## A Local Solution



- ◆ Implement Environmental Management System (EMS)

- ◆ Leadership & Ownership

- ◆ Continuous Improvement

- Train Staff / Prisoners

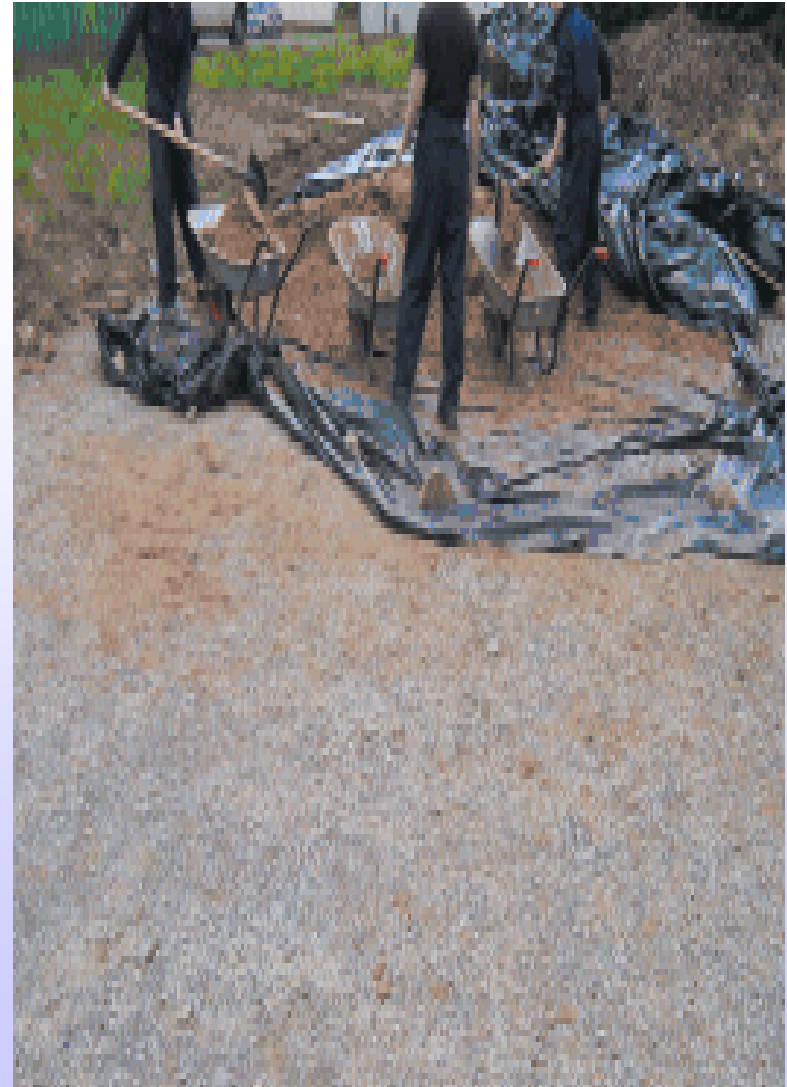
- Environmental Awareness

- Standardised Documented Approach Staff & Prisoners Involved



# An Environmental Strategy

## Local Solutions



# An Environmental Strategy

## A Local to A Global Solution



- ◆ Leadership
- ◆ Vision
- ◆ Training & Awareness
- ◆ Strategy and Policy Integration
- ◆ Communication
- ◆ Culture



# An Environmental Strategy

## Steps to Success

- ◆ Management Support
- ◆ Continuous Improvement
- ◆ Partnership Local / Global
- ◆ Ownership
- ◆ Recognising Achievements



# An Environmental Strategy

## Then and Now

- ◆ No Action Plan
  - ◆ Informal Compliance
  - ◆ Ad Hoc Understanding of Local Environment
  - ◆ Untrained Staff
  - ◆ Limited Prisoner Involvement
- Procedures Developed
  - Environmental Register of Legislation
  - Strategic Environmental Impact Assessment
  - Certified Staff Training
  - Certified Structured Training Activities



# An Environmental Strategy

## From Pillory to Podium



- ◆ Legislative Compliance
- ◆ Trained Motivated Staff & Prisoners
- ◆ Charitable Links
- ◆ Reduced Costs
- ◆ Resource Usage Monitoring
- ◆ Continuous Environmental Audits
- ◆ Focused Data Collection



# An Environmental Strategy

## Custodians of Our Environment



# An Environmental Strategy

## Custodians of Our Environment



# An Environmental Strategy

## Achievements

- ◆ All Prisons have Environmental Teams
- ◆ Waste Management Activities with Prisoner involvement.
- ◆ Major Recycling Initiatives All Prisons
- ◆ Castlerea Prison Composting Programme
- ◆ Arbour Hill Prison DVD
- ◆ Portlaoise Prison “We Can Still Make A Difference”



# An Environmental Strategy

## Achievements

- ◆ Higher Certificate EMS Course
- ◆ Cré Compost Operator Course
- ◆ SEI Award
- ◆ Energy Bureau
- ◆ Irish Prison BREEAM
- ◆ **ISO 14001 Certification / International Recognition**





A Quote from A Prisoner.

“Being Trained and working here has given me the feeling of being part of something and I feel I'm giving something back.”



# Dublin City Council Neighbourhood and Living Dublin Awards



# Taoiseach's Excellence Awards 2008





Standing Still  
Is the fastest way  
To move backwards  
In a rapidly changing  
world

*Thank you*

*[ptdunne2@irishprisons.ie](mailto:ptdunne2@irishprisons.ie)*